



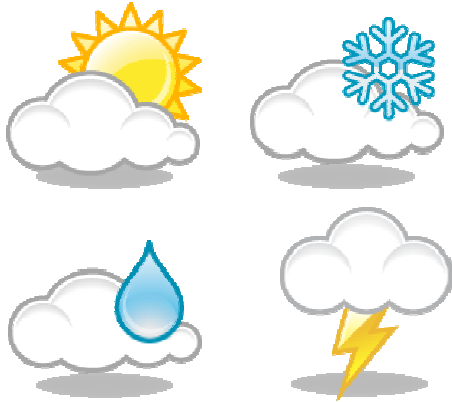
novar.

Demand Response

Program Implementation and Execution

October 28, 2008

Weather



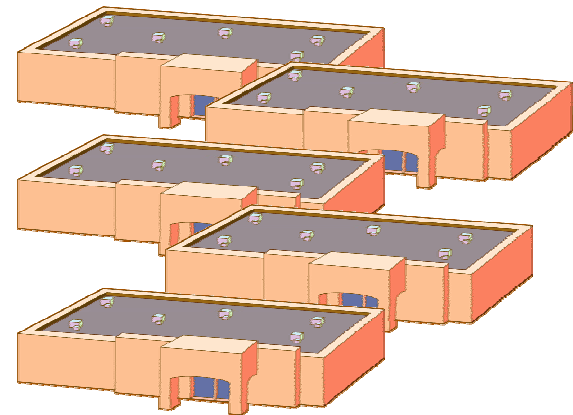
Multiple Programs

CAISO
ERCOT
NYISO
ISONE
PJM
ONTARIO

Connectivity



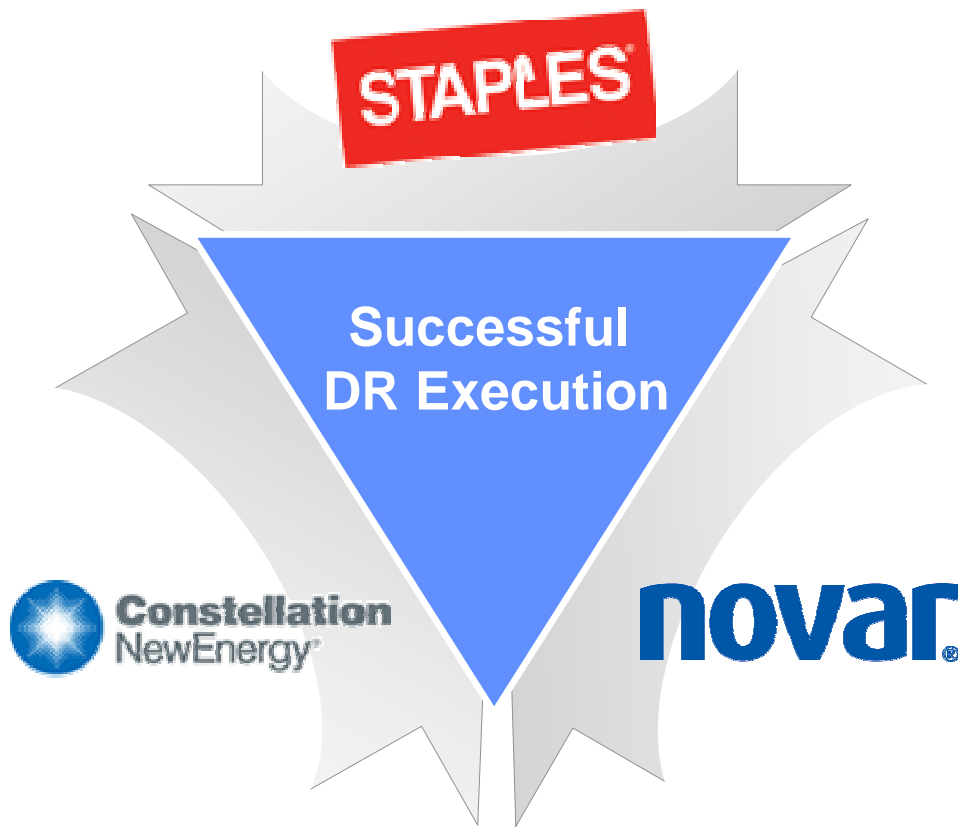
Site Management



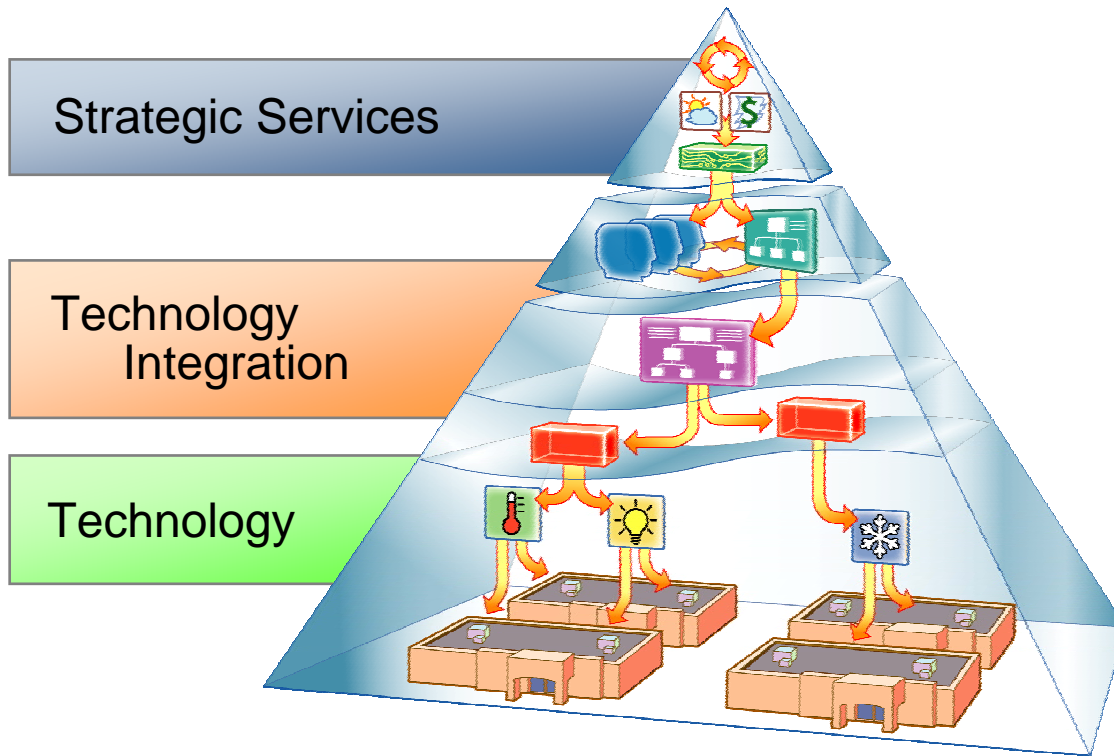
- **Determine level of demand reduction your business is willing to commit to**
 - How much?
 - How long?
 - Economic trade-offs?

- **Create a list of controllable loads**
 - HVAC equipment
 - Lighting
 - In-store displays
 - Etc...

- **For each Load...**
 - Determine load size in kW
 - Establish the control strategy & algorithm



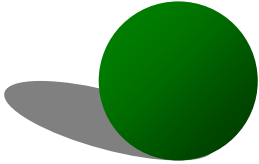
- Understand demand response programs across ISOs
- Size the opportunity and enroll in programs
- Design DR strategies based on the opportunity size and specific retailer needs
- Implement the strategies to ensure compliance and minimize impact on the stores
- Execute events and verify the load shed



- Rapid response across hundreds or thousands of sites
- Unique strategies by building type
- Robust execution model to ensure compliance
- Ability to measure and verify performance for the ISO



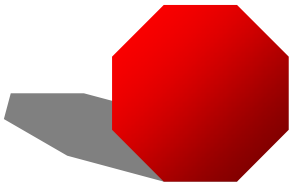
- Opus, Novar's latest technology, delivers a more flexible, software-based approach to load shedding
- Strategies across the enterprise, within regions, or within an individual store
- Auto-DR and the Automatic execution of events



- **Do** sign up for demand response programs
 - Makes good economic and environmental sense!

- **Do** create a proactive Demand Response strategy

- **Do** invest for the future and install an energy management system with...
 - Multi-site design
 - Flexible control strategies
 - Strong supporting professional services



- **Don't** wait until the demand response event to figure out what you are going to do...



David Haynes, VP Marketing, Novar
216.682.1437

David.Haynes@Novar.com

www.Novar.com