

# Challenges and Opportunities for Wind on Power Systems



**KEN DRAGOON**  
**RENEWABLE NORTHWEST PROJECT**  
**OCTOBER 2010**

# Renewable Northwest Project (RNP)



## **Non Profit Renewable Resource Advocacy Organization**

Promoting renewable energy in Oregon, Washington, Idaho and Montana through:

- Policies (laws, regulations, and utility business practices)
- Responsible siting
- Retail markets.

## **Members**

Businesses, non-profits, educational institutions



# Integrating Wind on Power Systems

3

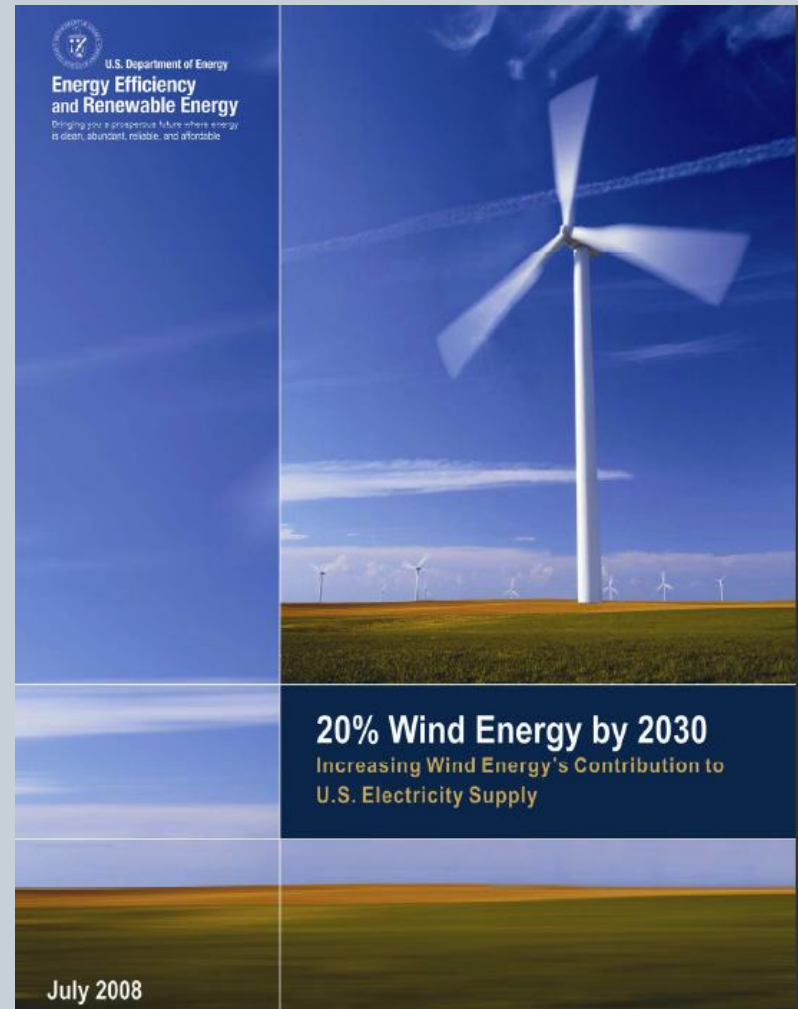
- Wind generation is inherently variable and not entirely predictable.
- *Wind integration refers to changes in power system operations that allow wind energy to be most efficiently used to reliably meet demand for power.*



# Can it Be Done?

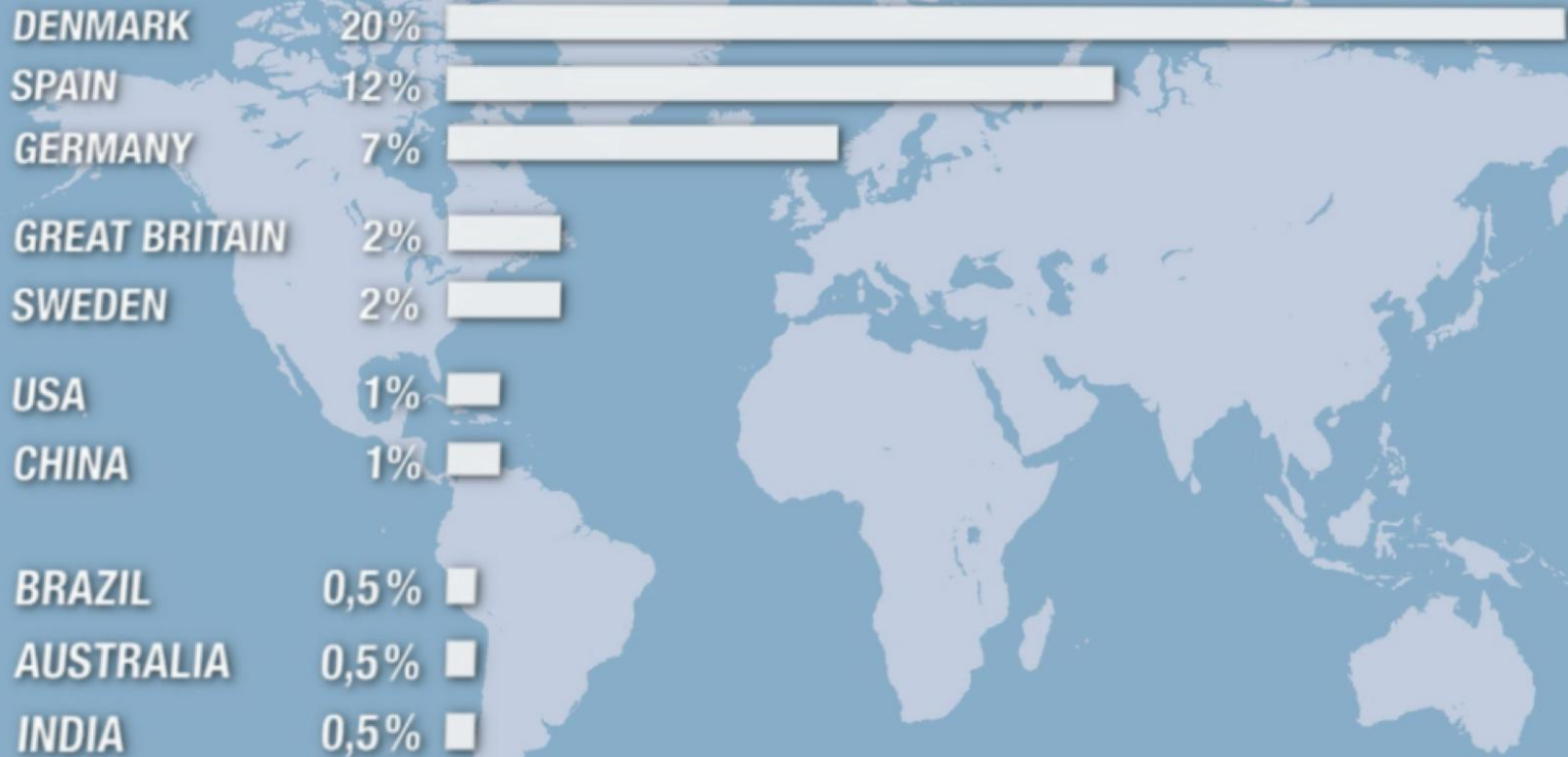
4

- **Yes!**
  - Studies indicate wind can serve anywhere from 20% (US DOE) to 41% (Eir Grid) of electrical energy demand.
  - Denmark currently generates 20% of its electric energy from wind and targets 50% in ten years.
  - Germany has more than 25,000 MW of wind, 7 % of demand.
  - Spain has about 20,000 MW of wind, 12% of demand.

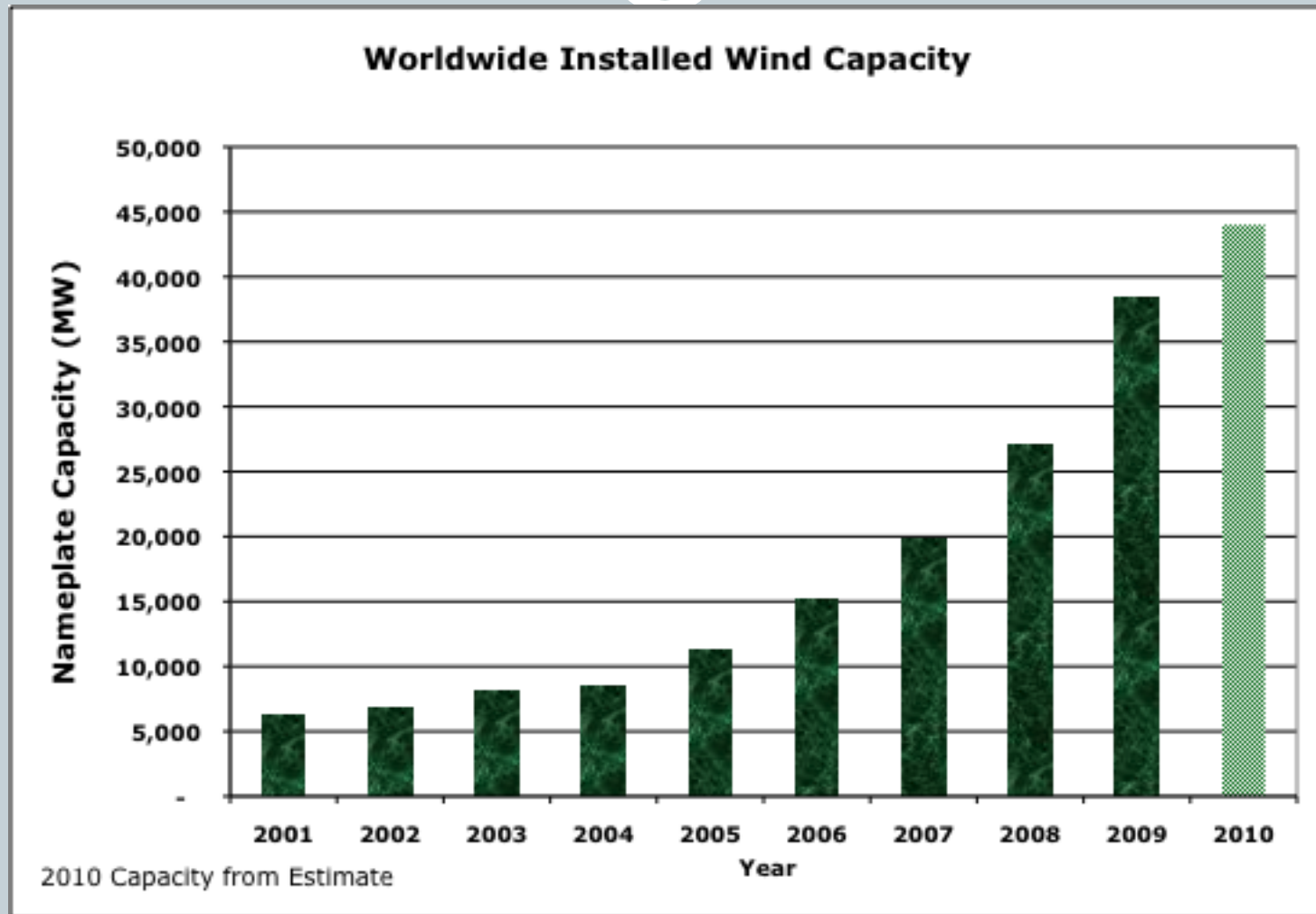


# Top Wind Countries by Penetration Rates

5

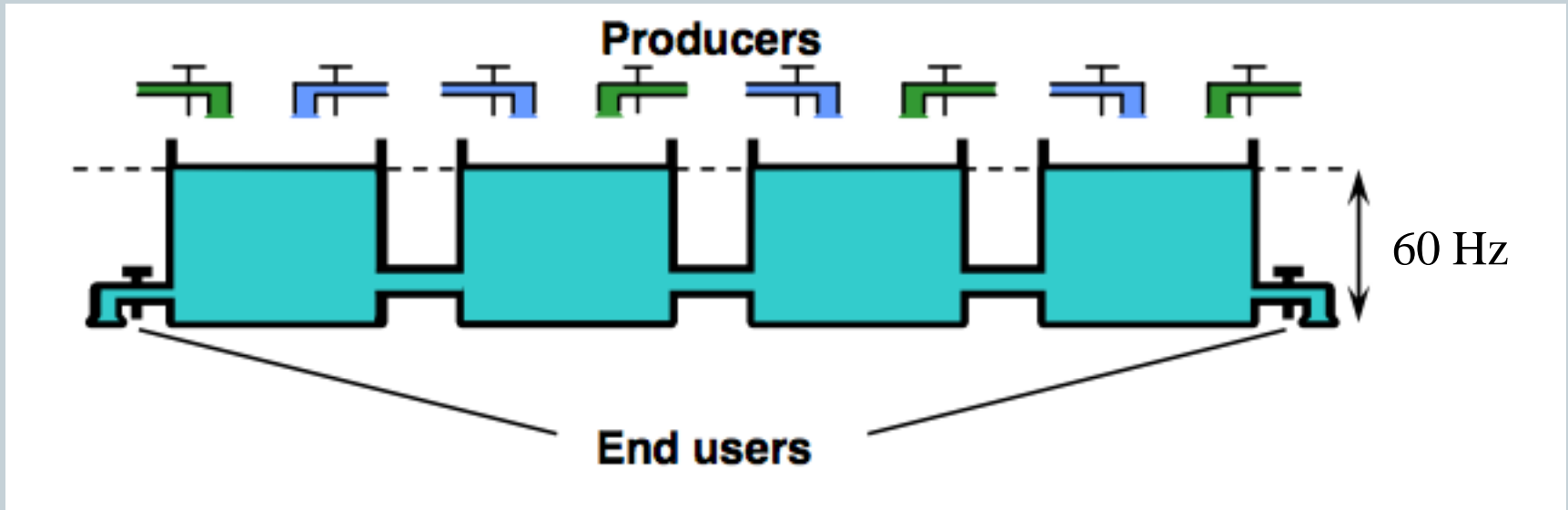


# Wind is Fastest Growing Resource



# The Balancing Challenge

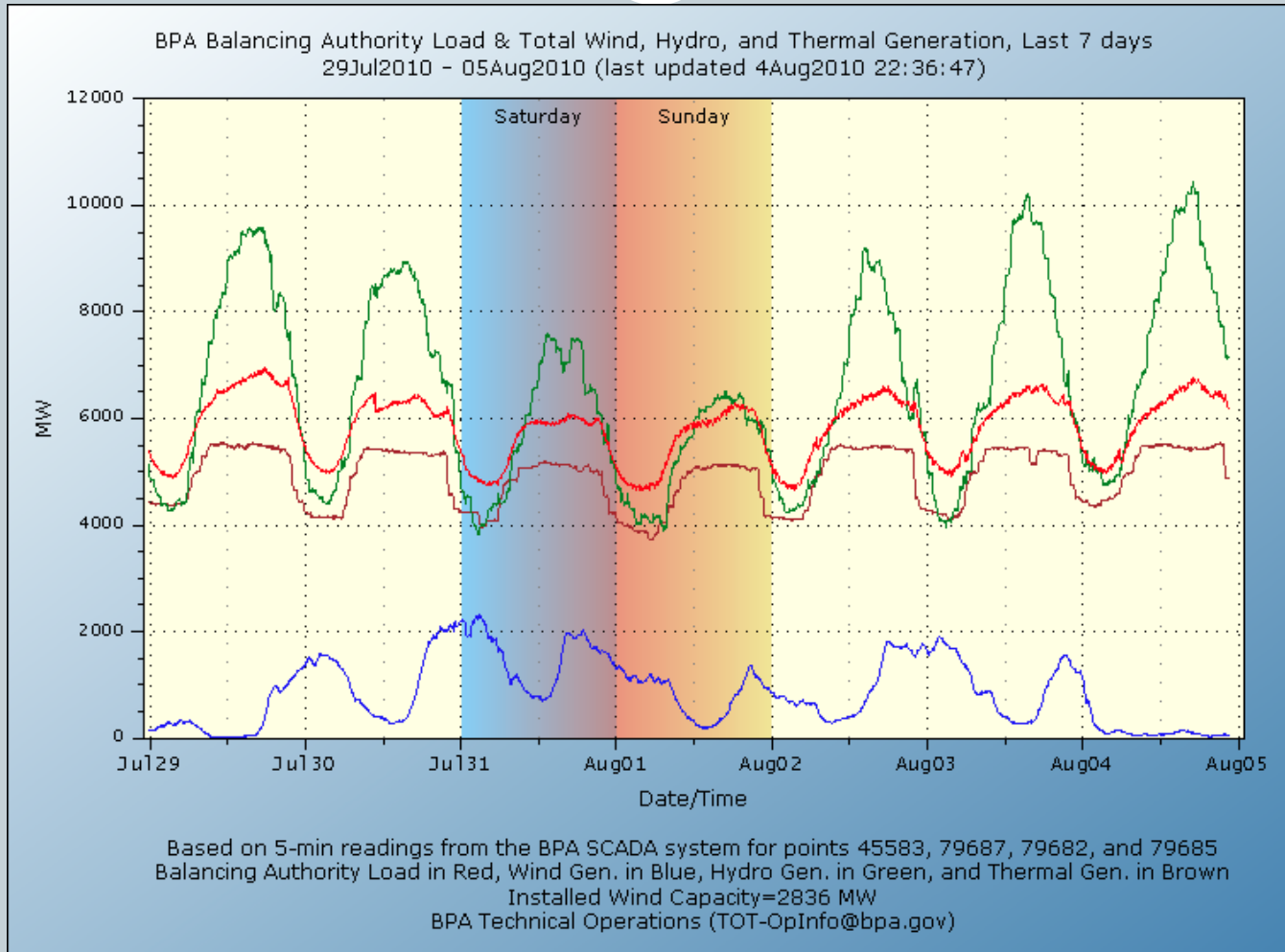
7



Adapted from *The Nordic Electricity Market*, Anders Høumøller, 2010.

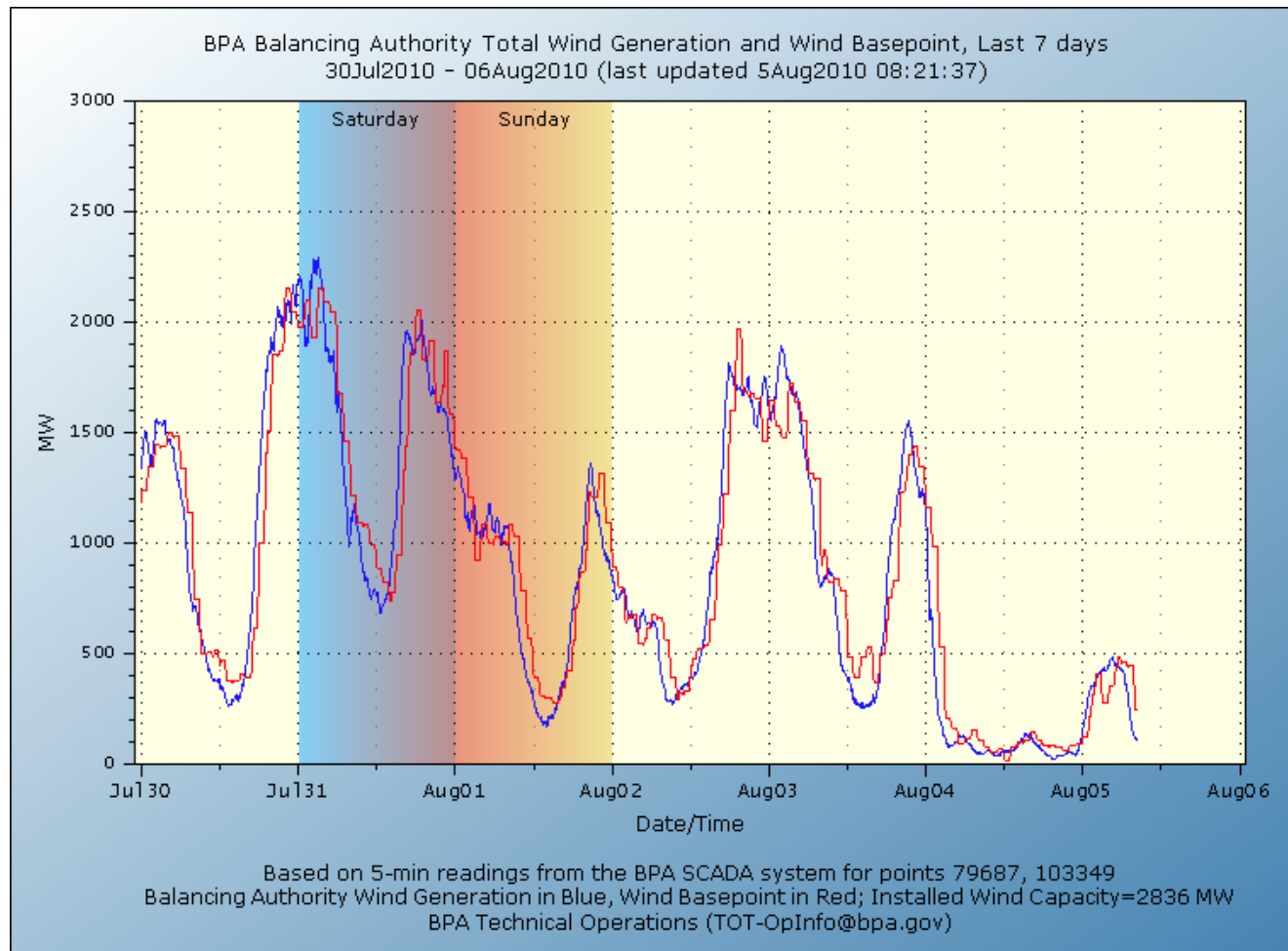
# Power Plants Adjust Output to Meet Demand

8



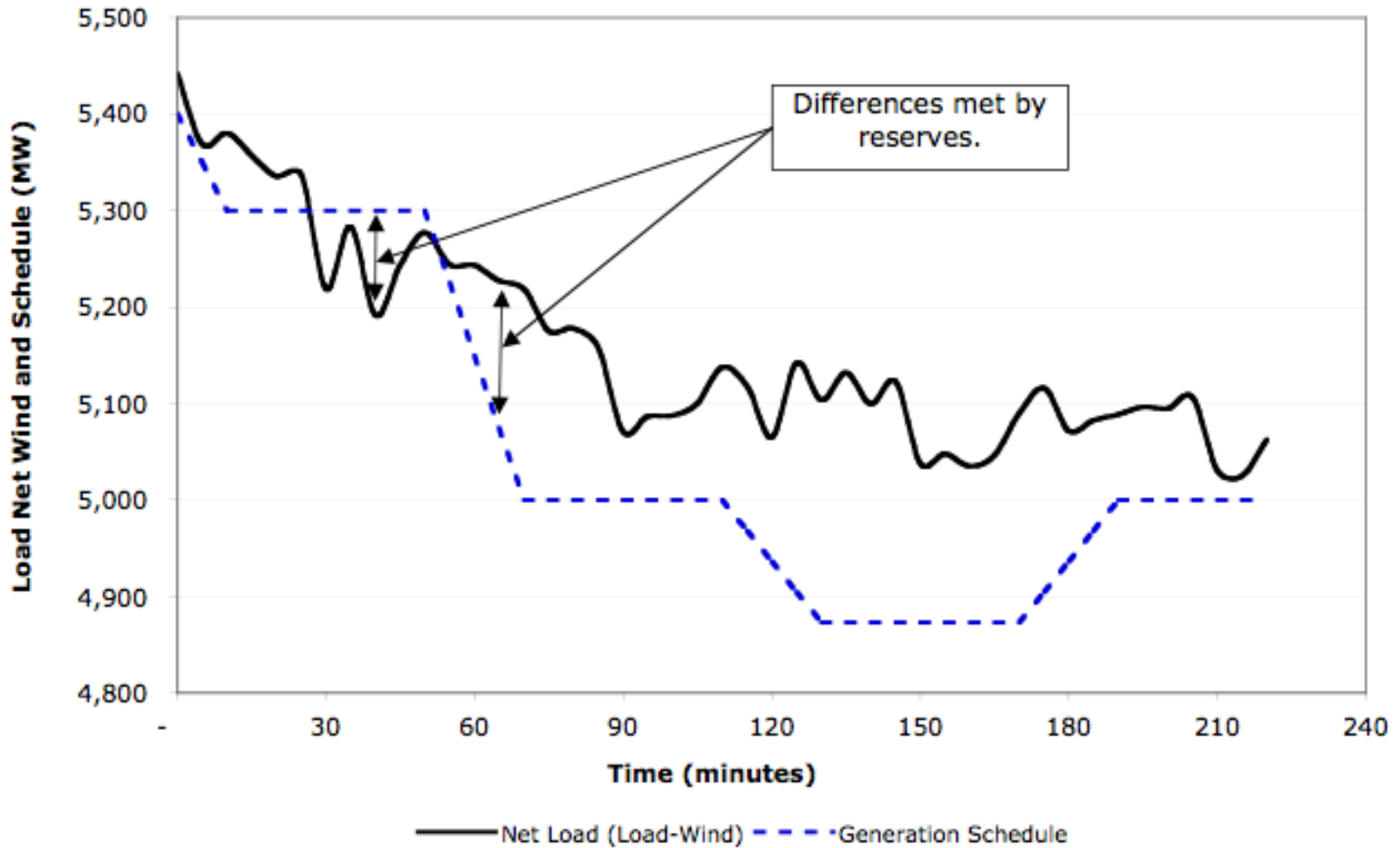
# Hour-Ahead Schedule Errors

9



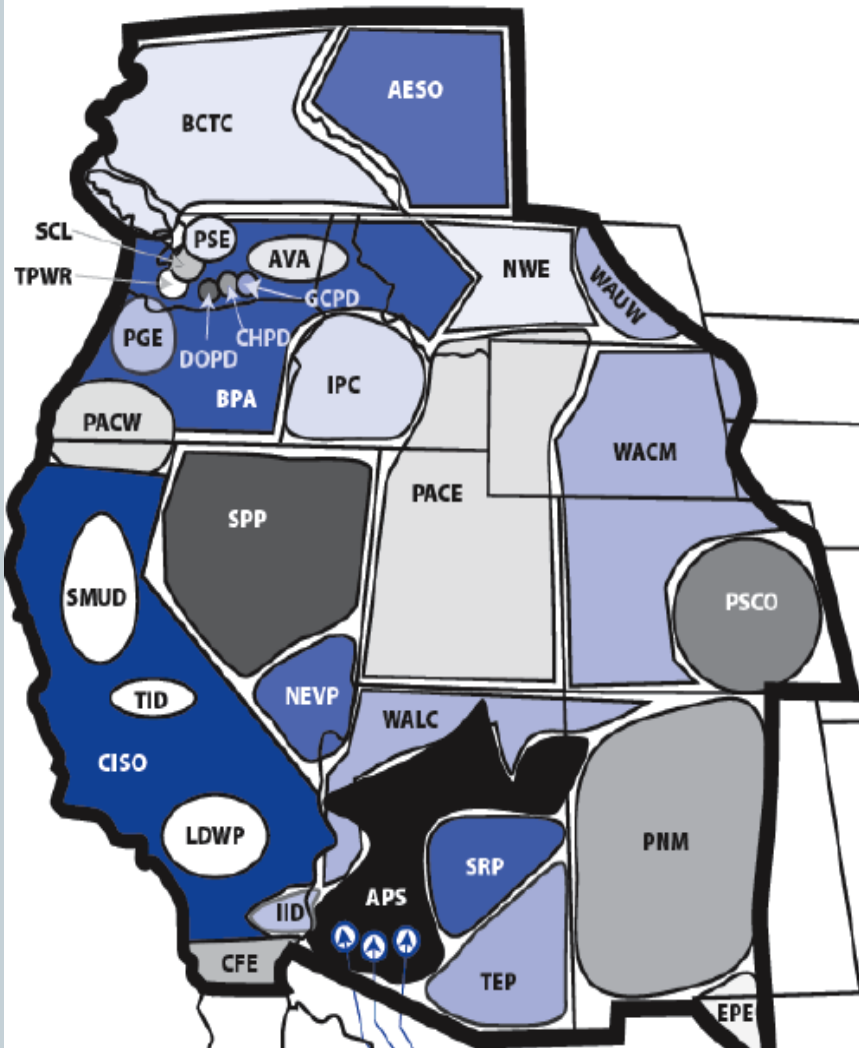
# Reserve Generation Makes the Difference

10



# Reducing the Reserve Burden

11



- Sharing across time and geography needed.
  - More liquid markets
  - Fewer “Balancing Areas”

# What About Storage?

- Co-author of Eir Grid 41% study, Dr. Mark O'Malley:  
***“Storage is a fallacy!”***
  - Likely to be less expensive to actively manage wind generation.
- FDR reservoir behind Grand Coulee Dam has energy storage equivalent of 150 million electric vehicle batteries.
- Need for storage is indicated by diurnal wholesale price spreads.
  - Recent price spreads have not been high enough to justify storage.

# Biggest Challenge for Wind

13

- The biggest challenge for power systems with high levels of wind penetration is usually:
  - *Accommodating high levels of wind generation when demand is low.*
- This is a 180 degree turn around from power system concerns when I began my career (too little energy), and is by far the easier challenge.
- *Maybe Storage is not a fallacy?*
  - As wind becomes a larger share of the system, the value of storage rises.

# Balancing at 50% Wind

- Denmark plans to supply half its demand with wind generation in ten years.
  - Wind integration is a national focus and will require more radical changes in how their system operates.
- Denmark's Risø National Laboratory Executive Director Henrik Bindselev:
  - *The power system will change from a system where supply meets demand to a new paradigm in which demand will respond to supply.*

# Advantages of Thermal Storage

15

This one facility in Copenhagen has the capability of storing 2,500 MWh of thermal energy-- equivalent to 100,000 electric car batteries.

Cost of existing storage infrastructure MUCH cheaper than building new.

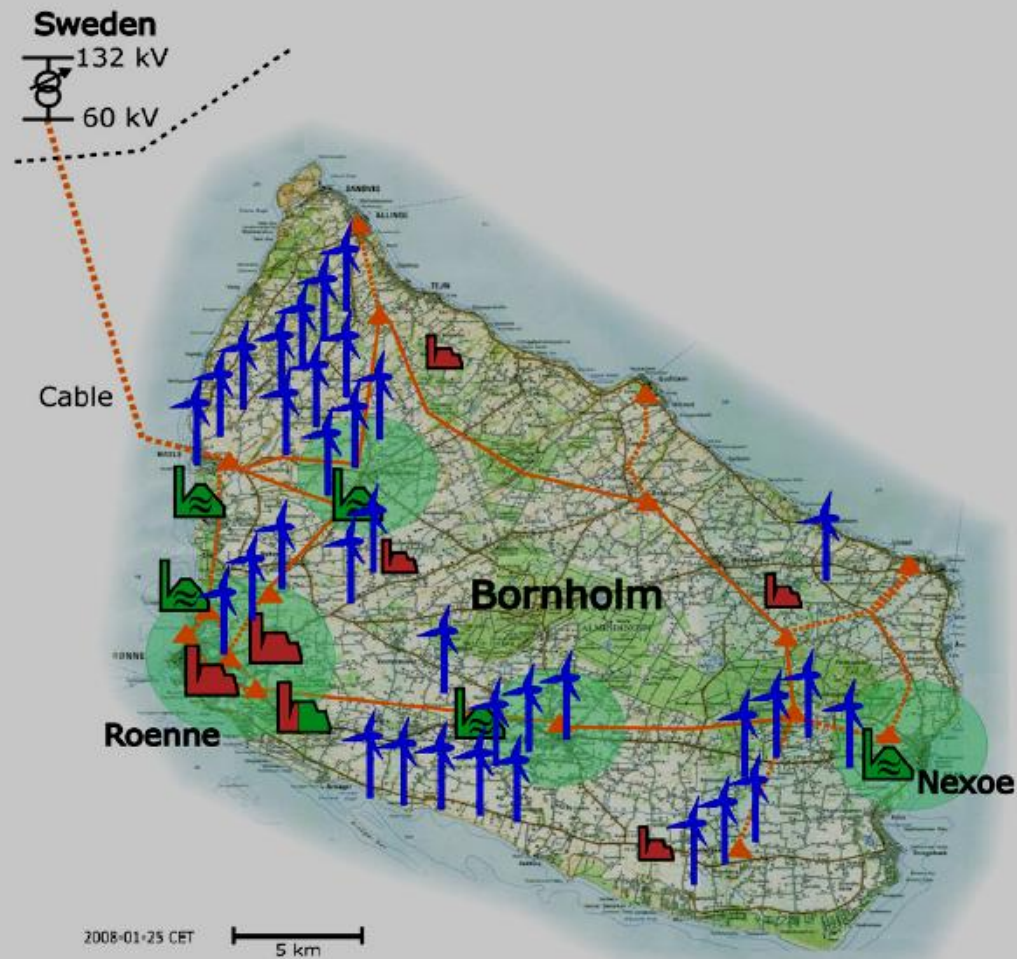
Lower losses, no cycling limits, low maintenance costs.



# Island of Bornholm

16

- Danish Island off the coast of Sweden with a peak demand of about 65 MW will become the first utility-scale power system entirely fueled by renewable energy.
  - Wind
  - Solar
  - Bio fuels
  - Energy storage (thermal and EV batteries)



# Victim of Our Success

17

- New challenges involve siting.
  - Wildlife– Eagles, Sage Grouse, Prairie Chicken
  - Radar
  - Visual Impacts



# Summary

18

- Much larger amounts of wind can be accommodated than current levels with existing infrastructure.
  - Not counting transmission, though even that is debatable.
- Much larger amounts of wind are being handled by power systems in Europe with no changes to the power system make-up.
- Largest impediments and cost contributors relate to the structure of markets, especially in the Northwest.
- New challenges relate to siting issues are beginning to arise in a serious way.